

@minabrosseriedubai  
@chefmichaelmina

# MINA

BRASSERIE

Indulge yourself in MINA Brasserie, the culinary oasis nestled amidst the sizzling foodie paradise of Dubai. Featuring a selection of globally influenced dishes in partnership with award-winning celebrity Chef Michael Mina.

MINA Brasserie is a home away from home, highlighting dishes from carefully-sourced seasonal ingredients — a celebration of global influences.



PLEASE SCAN CODE TO BROWSE OUR MENU

## Art Menu

We've concocted thirteen refreshing, mixologist-approved cocktails and mocktails that are inspired by—and pair effortlessly with some of the most iconic works of art.

*All prices are in U.A.E. Dirhams, inclusive of 10% service charge, 5% VAT and are subject to 7% Municipality fee.*



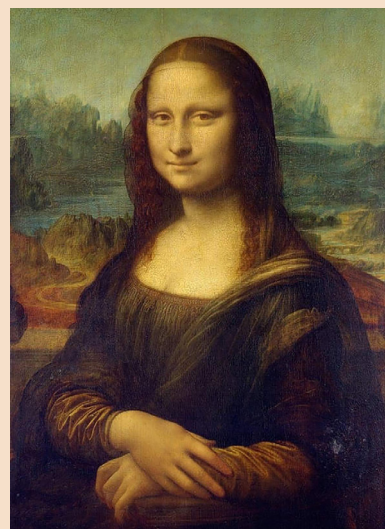
1434

### THE ARNOLFINI PORTRAIT Jan van Eyck

AED 75

*Butterfly Pea Infused Rum, Lime Juice,  
Disaronno, Cointreau, Ginger Beer*

We pay homage to the couple's heritage by using Disaronno in the cocktail. The rich colours of the clothes are represented with butterfly-pea infused rum for the purple shade of his coat and the lime peel for the lady's dress.



1503

### MONA LISA Leonardo Da Vinci

AED 70

*Grappa, Lime Juice, Taragon Basil  
Anise Syrup, Spray of Cointreau &  
Chartreuse*

Inspired by the influences of Italy, represented through Grappa Nonino, where Da Vinci was born and painted Mona Lisa, and France, represented through Cointreau, where he passed away and where the painting has been for decades.

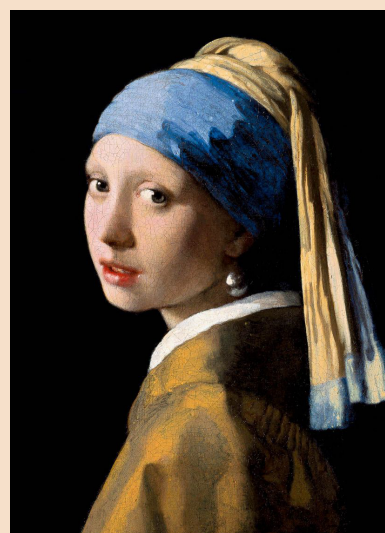
1665

### GIRL WITH THE PEARL EARRING Johannes Vermeer

AED 80

*Ylang Ylang Infused Ketel One, St.  
Germain, Aloe Vera, Passionfruit Puree,  
Elderflower Syrup*

The Dutch heritage of the painter is represented through Ketel One vodka. We have painted the glass to resemble the turban and the exotic ingredients reminiscent of the colonial era in which Vermeer created this painting.



➤ BARR BITES ➤

GRILLED HALLOUMI (V) 45

BURRATA BRUSCHETTA (V) (N) 90

PARMESAN CHICKEN MILANESE 55

BRESAOLA CRISP 60

SMOKED SALMON CRISP 60

ARTISAN CHEESE PLATTER (N) (V) 100



*(V) Vegetarian, (N) Contain Nuts, (GF) Gluten Free*

*All prices are in U.A.E. Dirhams, inclusive of 10% service charge, 5% VAT and are subject to 7% Municipality fee.*



## ➤ APERITIF ➤

	5GL
Aperol	55
Campari	60
Cynar	50
Mancino secco	55
Mancino rosso	55
Mancino ambrato	55
Pimm's N°1	50
PunteMes	50
Carpano Antica Formula	70

## ➤ DIGESTIF ➤

	5GL
Benedectine	55
Limoncello	60
Branca Menta	70
Fernet Branca	65
Amaretto Disaronno	50
Frangelico	65
Grand Marnier	60
Green Chartreuse	90
Sambuca	50
Baileys	60
Drambuie	55

## ➤ SOFT DRINKS ➤

Pepsi / Diet Pepsi / 7up / Diet 7up	35
Fever Tree Ginger Beer /	35
Fever Tree Ginger Ale	
Soda Water / Tonic Water	
Redbull	45

## ➤ WATER ➤

Acqua Panna	25/40
San Pellegrino	25/40





1851

## THE MONARCH OF GLEN Edwin Landseer

AED 80

*Glenfiddich F&C, Lemon Oleo Saccharum, Lemon Juice*

The Stag symbolizing strength and power is represented in the cocktail through Glenfiddich, and the smoke mimics the fog in background of the painting. Smoky and tangy this cocktail embodies the spirit of Scotland.

1889

## STARRY NIGHT Vincent Van Gogh

AED 80

*Silvermoon & Lemongrass Syrup,  
Citrus Acid, Violet Liqueur, Prosecco*

This light cocktail combines Prosecco with Silvermoon tea and lemongrass for a clean and fresh taste. The violet liqueur adds floral notes and the distinct blue flavour to represent the night sky, with edible gold that shines like the Starry Night.



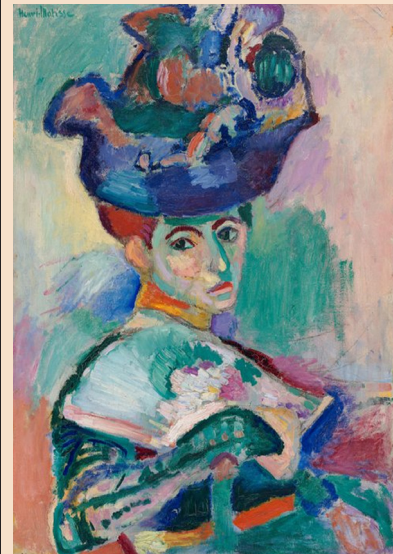
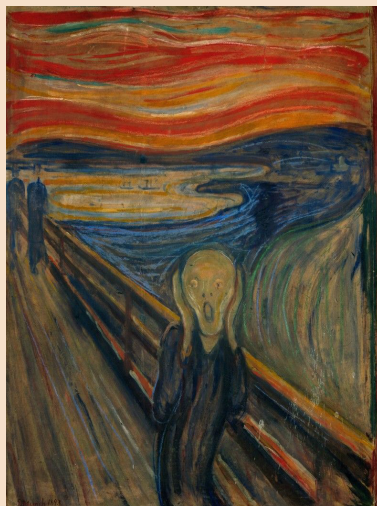
1893

## THE SCREAM Edvard Munch

AED 75

*Hennessy VS, Spiced Rum, Baileys,  
Cacao Liqueur, Arabic Coffee*

The glass is brushed with coloured chocolate to resemble the painting's style. Representing a country with cold weather and long winters, the spiced rum and cognac will make you feel warm at any time of the day.



1905

## WOMAN WITH A HAT Henri Matisse

AED 80

*Chambord, Tanqueray Dry,  
Sauvignon Blanc, Strawberry Kaffir  
Lime Cordial, Citrus Acid*

To pay tribute to Fauvism, we've created a bright and vibrant cocktail, with expressive flavour to match. Mixing Chambord and Sauvignon Blanc, a nod to the french heritage of Henri Matisse.

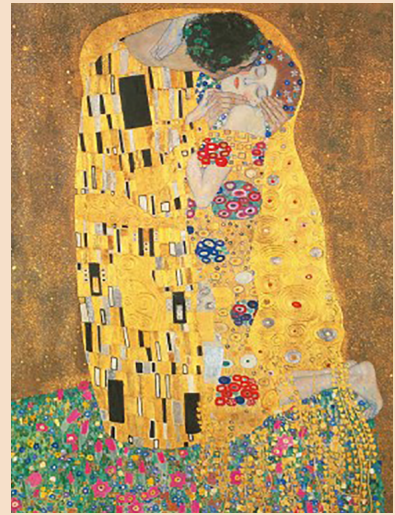
1907 - 1908

## THE KISS Gustav Klimt

AED 75

*Bulleit Bourbon, Banana Liqueur, Caramelized Banana Syrup, Chocolate Bitter*

The Bourbon and banana liqueur create the uniquely brilliant golden yellow hue representing the two intertwined bodies. Just like true love, the fruity and rich flavours hug your palate throughout. The garnish represents the head of the man in the painting and burns of desire, just like passion, in front of you.



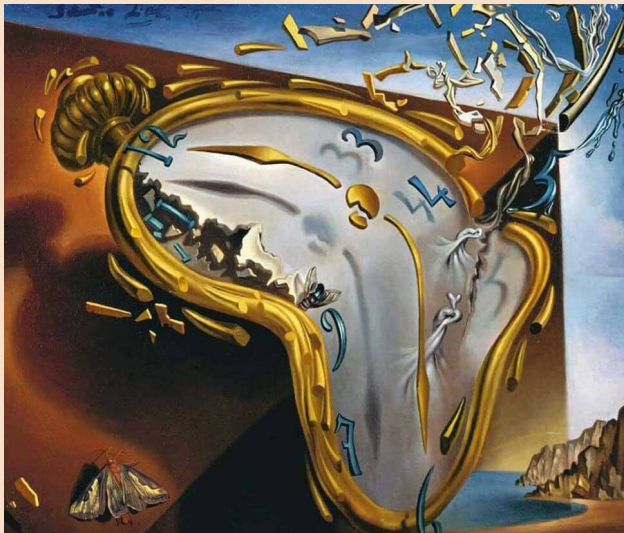
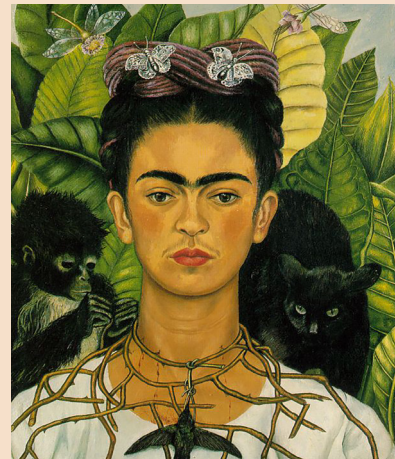
1940

## SELF PORTRAIT W/ THORN NECKLACE Frida Kahlo

AED 70

*Bergamot Infused Tequila Blanco, Grapefruit- Lavender Cordial, Tonic*

The bird, usually symbolic of freedom, here is caught in Frida Kahlo's thorn necklace, symbolizing her struggles in life. The tequila in the cocktail signifies her heritage and favourite spirit. The grapefruit lavender cordial and the tonic water represent her bitterness in life.



1954

## MELTING WATCH Salvador Dali

AED 70

*Pandan Infused Rum, Coconut Washed Campari, Lime Juice, Demerara, Pineapple Juice*

Salvador Dali was a surrealist, his work often dreamlike to accentuate the mysterious and unexplainable aspects of life. The array of contrasting flavours in this drink, expressed through the bitter sweet coconut washed campari, express Dali's theory of softness and hardness which was central to the thinking of Dali at the time of this painting.



## ⇒ COGNAC ⇐

	SGL	BTL
Remy Louis XIII	2,785	48300
Remy XO	280	6040
Remy VSOP	115	2260
Hennessy XO	255	5515
Hennessy VSOP	100	1945
Hennessy VS	75	1260
Courvoiser XO	260	5725
Courvoiser VSOP	115	1945
Courvoiser VS	80	1420
Martell VSOP	120	1995
Martell Cordon Bleu	230	3990

## ⇒ VODKA ⇐

	SGL	BTL
Ketel One	70	1315
Ciroc	90	1785
Belvedere	90	1840
Grey Goose	90	1840
Beluga Noble	105	1945
Beluga Gold	230	4015
Elite By Stolichnaya	85	1945
Stolichnaya	60	895
Tito's	60	895
Russian Standard	60	895

## ⇒ AMERICAN, CANADIAN & IRISH ⇐

		BTL
Knob Creek	75	1105
Woodford Reserve	80	1210
Bulleit Bourbon	60	1155
Bulleit Rye	70	1575
Makers Mark	70	1420
Jack Daniel's Old N°7	80	1315
Jim Beam	65	895
Crown Royal	60	995
Jameson	65	1315

## ⇒ BRANDY, PISCO, GRAPPA ⇐

Marquis de Puysegur VSOP	70
Calvados Boulard XO	135
Pisco Carvedo	65
Pisco Lapostolle	60
Nonino Vendemmia Millesimata	65
Nonino Chardonnay Barrique	80

## ⇒ BEER ⇐

Peroni	65
Asahi	65
Heineken	65
Hoegaarden White	65



## ⇒ SINGLE MALT ⇒

	SGL	BTL
Dalmore 15Yrs	165	2890
Dalmore Cigar Malt	205	3675
Glenmorangie Original	90	1525
Glenfiddich 12Yrs	80	1630
Glenfiddich 15Yrs	90	1890
Glenfiddich 18Yrs	140	2890
Glenfiddich Grand Cru	350	8000
The Glenlivet 12Yrs	80	1735
The Glenlivet 15Yrs	125	2260
The Glenlivet 18Yrs	175	2995
The Glenlivet 21Yrs	405	7195
The Macallan 12Yrs	115	2050
The Macallan 15Yrs	175	3940
The Macallan 18Yrs	310	5620
Oban 14Yrs	175	3625
Ardbeg 10Yrs	95	1575
Caol Ila 12Yrs	125	1995
Lagavulin 16Yrs	195	4150
Laphroaig 10Yrs	75	1420

## ⇒ BLENDED WHISKY ⇒

J.W. Blue Label	365	6355
J.W. Platinum Label	195	4360
J.W. Gold Label	125	1945
J.W. Black Label	80	1525
J.W. Double Black Label	90	1680
Chivas Regal 18Yrs	155	2995
Chivas regal 12Yrs	80	1735
Dewar's 12Yrs	75	1315
Dewar's 15Yrs	95	1735
Dewar's 18Yrs	130	2150
Monkey Shoulder	85	1470

## ⇒ NON-ALCOHOLIC ⇐

### WINES

Pearl Champagne	70
Vintense Cuvee Prestige L.E.	55
Vintense Wild Spring Chenin Blanc	45
Vintense Cepage Syrah	45
Vintense Origine Les Galetes	50

### BEERS

St.Peter's Without Gold	65
St.Peter's Without Original	65
Biere des Amis	60

### GIN

Pearsons Hibiscus & Rose	55
Pearsons Rhubarb & Ginger	55
Pearsons Classic Botanicals	55

### MOCKTAILS

Peach & Pearl	55
<i>Peach &amp; Pear Cordial, Citrus, Soda</i>	
<i>Pearl Champagne</i>	
Blueberry Fields	55
<i>Blueberry Shrub, Pearl Champagne</i>	
Flamingo	55
<i>Basil, Cucumber, Cardamom Syrup, Lime Juice, Pineapple Juice, Hibiscus Extract</i>	
Tropical Sunset	55
<i>Passionfruit Puree, Lychee Puree, Pineapple juice, Cranberry Juice</i>	
Sunflower	55
<i>Caramel Banana Syrup, Green Apple Juice</i>	
<i>Passionfruit Puree</i>	

## ✧ WINES BY THE GLASS ✧

BUBBLES	GLS	BTL
Jeio, Prosecco <i>Valdobbiadene, Italy DOC</i>	80	480
Ruinart Rosé <i>Reims, France NV</i>	245	1470
Ruinart Brut <i>Reims, France NV</i>	175	1050

### WHITE

Langlois-Château, Sancerre <i>Loire Valley, France</i>	155	770
La Chablisienne, La Pierrelée <i>Chablis (V)</i>	130	650
Fantinel, Pinot Grigio <i>Borgo Tesic, Italy</i>	105	520
Cosseti, Gavi di Gavi 'Cortese' <i>Piedmont, Italy</i>	105	520
Baby Doll Sauvignon Blanc <i>Marlborough, New Zealand</i>	85	425
Dr. Loosen, Riesling <i>Mosel, Germany</i>	80	400
Beringer, Main & Vine Chardonnay <i>California, USA</i>	75	370

### ROSÉ

Whispering Angel <i>Côtes de Provence, France (O)</i>	125	600
M de Minuty <i>Côtes de Provence, France (O)</i>	95	475
Cuveé Henri Fabré <i>Côtes de Provence, France</i>	75	375

### RED

Le Volte, Dell' Ornellaia <i>Tuscany, Italy</i>	175	860
Bouchard Pere & Fils, Pinot Noir <i>Bourgogne, France</i>	135	670
Jean-Pierre Moueix <i>St. Emillion, Bordeaux France</i>	125	620
Rioja Crianza, Bodegas Navajas <i>Rioja DOC, Spain</i>	90	450
Santa Julia Reserve, Malbec <i>Uco Valley, Mendoza, Argentina (O)</i>	80	400

## ⇒ RUM ⇐

	SGL	BTL
Matusalem Gran Reserva 15Yrs	80	1260
Diplomatico Reserva	155	3380
Zacapa 23Yrs	130	2365
Flor De Cana Centenario 25Yrs	220	4255
Plantation XO	220	3900
Appleton 12Yrs	90	1680
Bacardi 8Yrs	65	1105
Bacardi Gold	60	935
Bacardi Carta Blanca	55	895
Havana 7Yrs	65	1315
Captain Morgan	55	895
Sailor Jerry	55	895
Kraken	65	895
Cachaça 51	60	895

## ⇒ TEQUILA ⇐

	SGL	BTL
Don Julio 1942	310	6195
Don Julio Anejo	135	2730
Don Julio Reposado	120	2470
Don Julio Blanco	95	2100
Patron Anejo	125	1995
Patron Reposado	115	1840
Patron Silver	80	1525
Patron Xo Coffee	60	1420
El Jimador Reposado	60	895
El Jimador Blanco	60	895
Crema De Mezcal	85	1525
Del Maguey Chichicapa Mezcal	155	2890

## ⇒ JAPANESE WHISKY ⇐

### ⇒ GIN ⇐

Sipsmith London Dry	75	1420
Monkey 47	145	1630
London N°3	75	1420
Gin Mare	85	1315
The Botanist	75	1315
Hendrick's	75	1155
Tanqueray Ten	80	1210
Tanqueray	60	895
Bombay Sapphire	65	895
Roku	80	1200

Hibiki Harmony	115	2155
Yoichi Single Malt	110	1850
Suntory Chita single grain	155	2785
Nikka from the Barrel	85	1470

