

@minabrosseriedubai
@chefmichaelmina

MINA

BRASSERIE

Indulge yourself in MINA Brasserie, the culinary oasis nestled amidst the sizzling foodie paradise of Dubai. Featuring a selection of globally influenced dishes in partnership with award-winning celebrity Chef Michael Mina.

MINA Brasserie is a home away from home, highlighting dishes from carefully-sourced seasonal ingredients — a celebration of global influences.



PLEASE SCAN CODE TO BROWSE OUR MENU

Art Menu

We've concocted thirteen refreshing, mixologist-approved cocktails and mocktails that are inspired by—and pair effortlessly with some of the most iconic works of art.



1665

GIRL WITH THE PEARL EARRING Johannes Vermeer

AED 80

Ylang Ylang Infused Ketel One, St. Germain, Aloe Vera, Passionfruit Puree, Elderflower Syrup

The Dutch heritage of the painter is represented through Ketel One vodka. We have painted the glass to resemble the turban and the exotic ingredients reminiscent of the colonial era in which Vermeer created this painting.



1851

THE MONARCH OF GLEN Edwin Landseer

AED 80

Glenfiddich F&C, Lemon Oleo Saccharum, Lemon Juice

The Stag symbolizing strength and power is represented in the cocktail through Glenfiddich, and the smoke mimics the fog in background of the painting. Smoky and tangy this cocktail embodies the spirit of Scotland.

1889

STARRY NIGHT Vincent Van Gogh

AED 80

Silvermoon & Lemongrass Syrup, Citrus, Violet Liqueur, Prosecco

This light cocktail combines Prosecco with Silvermoon tea and lemongrass for a clean and fresh taste. The violet liqueur adds floral notes and the distinct blue flavour to represent the night sky, with edible gold that shines like the Starry Night.



All prices are in U.A.E. Dirhams, inclusive of 10% service charge, 5% VAT and are subject to 7% Municipality fee.

➤ BAR BITES ➤

GRILLED HALLOUMI (V) 55

BURRATA BRUSCHETTA (V) (N) 90

PARMESAN CHICKEN MILANESE 55

BRESAOLA CRISP 60

SMOKED SALMON CRISP 60

SHORT RIB BITE 95

ARTISAN CHEESE PLATTER (N) (V) 100



(V) Vegetarian, (N) Contain Nuts, (GF) Gluten Free

All prices are in U.A.E. Dirhams, inclusive of 10% service charge, 5% VAT and are subject to 7% Municipality fee.

⇒ APERITIF ⇐

⇒ DIGESTIF ⇐

5GL

Aperol	55	Benedectine	55
Campari	60	Limoncello	60
Cynar	50	Branca Menta	70
Mancino secco	55	Fernet Branca	65
Mancino rosso	55	Amaretto Disaronno	50
Mancino ambrato	55	Frangelico	65
Pimm's N°1	50	Grand Marnier	70
PunteMes	50	Green Chartreuse	90
Carpano Antica Formula	70	Sambuca	65
		Baileys	60
		Drambuie	55

⇒ SOFT DRINKS ⇐

⇒ WATER ⇐

Pepsi / Diet Pepsi / 7up / Diet 7up	40	Acqua Panna	35/55
Fever Tree Ginger Beer /	40	San Pellegrino	35/55
Fever Tree Ginger Ale			
Soda Water / Tonic Water			
Redbull	50		





1905

**WOMAN WITH A HAT
Henri Matisse**

AED 80

Chambord, Tanqueray Dry, Sauvignon Blanc, Strawberry Kaffir Lime Cordial, Citrus

To pay tribute to Fauvism, we've created a bright and vibrant cocktail, with expressive flavour to match. Mixing Chambord and Sauvignon Blanc, a nod to the french heritage of Henri Matisse.

1907 - 1908

**THE KISS
Gustav Klimt**

AED 75

*Bulleit Bourbon, Banana Liqueur,
Caramelized Banana Syrup, Chocolate
Bitter*

The Bourbon and banana liqueur create the uniquely brilliant golden yellow hue representing the two intertwined bodies. Just like true love, the fruity and rich flavours hug your palate throughout. The garnish represents the head of the man in the painting and burns of desire, just like passion, in front of you.



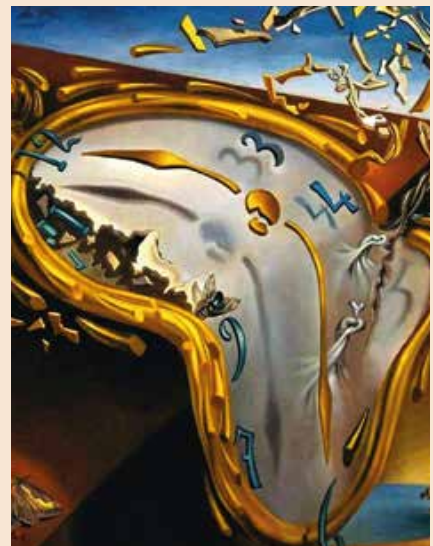
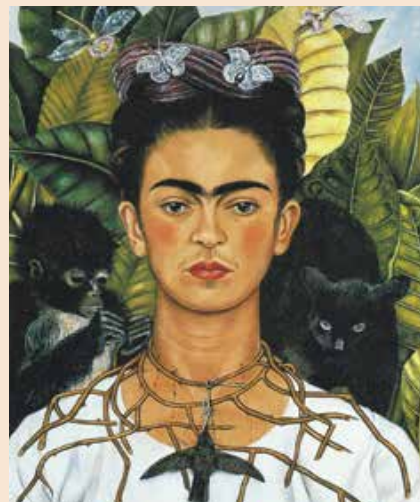
1940

**SELF PORTRAIT
W/ THORN NECKLACE
Frida Kahlo**

AED 70

*Bergamot Infused Tequila Blanco,
Grapefruit- Lavender Cordial, Tonic*

The bird, usually symbolic of freedom, here is caught in Frida Kahlo's thorn necklace, symbolizing her struggles in life. The tequila in the cocktail signifies her heritage and favourite spirit. The grapefruit lavender cordial and the tonic water represent her bitterness in life.



1954

**MELTING WATCH
Salvador Dali**

AED 70

*Pandan Infused Rum, Coconut Washed
Campari, Lime Juice, Demerara, Pineap-
ple Juice*

Salvador Dali was a surrealist, his work often dreamlike to accentuate the mysterious and unexplainable aspects of life. The array of contrasting flavours in this drink, expressed through the bitter sweet coconut washed campari, express Dali's theory of softness and hardness which was central to the thinking of Dali at the time of this painting.

→ WINES BY THE GLASS ←

BUBBLES (125ML)	GLS	BTL
Ruinart Rosé <i>Reims, France NV</i>	245	1470
Ruinart Brut <i>Reims, France NV</i>	175	1,050
Alberto Nani, Prosecco <i>Valdobbiadene, Italy DOC (O)</i>	80	480
WHITE (150ML)		
Chateau Langlois, Sancerre <i>Loire Valley, France</i>	155	770
La Chablisienne, La Pierrelée <i>Chablis (V)</i>	130	650
Fantinel, Pinot Grigio <i>Borgo Tesic, Italy</i>	105	520
Cossetti, Gavi di Gavi 'Cortese' <i>Piedmont, Italy</i>	105	520
Baby Doll, Sauvignon Blanc <i>Marlborough, Yealands</i>	85	425
Dr. Loosen, Riesling <i>Mosel, Germany</i>	80	400
Yalumba Y Series Chardonnay <i>South Australia</i>	70	350
ROSÉ (150ML)		
Whispering Angel <i>Côtes de Provence, France</i>	125	600
M de Minuty <i>Côtes de Provence, France</i>	95	475
Cuveé Henri Fabré <i>Côtes de Provence, France</i>	75	375
RED (150 ML)		
Le Volte, Dell' Ornellaia <i>Tuscany, Italy</i>	175	860
Bouchard Pere & Fils, Pinot Noir <i>Bourgogne, France</i>	150	740
Jean-Pierre Moueix <i>St. Emillion, Bordeaux France</i>	125	620
Rioja Crianza, Bodegas Navajas <i>Rioja DOC, Spain</i>	95	465
Santa Julia Reserve, Malbec <i>Uco Valley, Mendoza, Argentina (O)</i>	80	400
Chianti, Barone Ricasoli <i>Tuscany, Italy</i>	70	350

➤ COGNAC ➤

	SGL	BTL
Remy Louis XIII	2,785	48300
Remy XO	280	6040
Remy VSOP	115	2260
Hennessy XO	255	5515
Hennessy VSOP	100	1990
Hennessy VS	75	1260
Courvoiser XO	260	5725
Courvoiser VSOP	100	1990
Courvoiser VS	80	1420
Martell VSOP	120	1995
Martell Cordon Bleu	230	3990

➤ VODKA ➤

	SGL	BTL
Ketel One	70	1315
Ciroc	90	1840
Belvedere	90	1840
Grey Goose	90	1840
Beluga Noble	105	1945
Beluga Gold	230	4900
Elite By Stolichnaya	85	1945
Stolichnaya	60	895
Tito's	60	895
Russian Standard	60	895

➤ AMERICAN, CANADIAN & IRISH ➤

Knob Creek	75	1105
Woodford Reserve	80	1595
Bulleit Bourbon	60	1395
Bulleit Rye	70	1575
Makers Mark	70	1420
Jack Daniel's Old N°7	80	1315
Jack Daniel's Single Barrel	120	2050
Crown Royal	60	995
Jameson	65	1315

➤ BRANDY, PISCO, GRAPPA ➤

Marquis de Puysegur VSOP	70
Calvados Boulard XO	135
Pisco Carvedo	65
Pisco Lapostolle	60
Nonino Vendemmia Millesimata	65
Nonino Chardonnay Barrique	80

➤ BEER ➤

Peroni	65
Asahi	65
Heineken	65
Hoegaarden White	65



⇒ SINGLE MALT ⇐

	SGL	BTL
Glenmorangie Quinta Ruban	125	2050
Glenmorangie Lasanta	125	2050
Glenmorangie Nectar D'OR	135	2365
Dalmore 15Yrs	165	2890
Dalmore Cigar Malt	205	3675
Glenmorangie Original	90	1525
Glenfiddich 12Yrs	80	1630
Glenfiddich 15Yrs	90	1890
Glenfiddich 18Yrs	140	2890
Glenfiddich Grand Cru	350	8000
The Glenlivet 12Yrs	80	1735
The Glenlivet 15Yrs	125	2260
The Glenlivet 18Yrs	205	2950
The Glenlivet 21Yrs	405	7195
The Glenlivet 25Yrs	685	14995
Macallan 12Yrs	115	2050
Macallan 15Yrs	175	3940
Macallan 18Yrs	310	5620
Macallan 25Yrs	1950	42000
Springbank 10Yrs	125	2050
Oban 14Yrs	175	3625
Ardbeg 10Yrs	95	1575
Caol Ila 12Yrs	125	1995
Lagavulin 16Yrs	195	4150
Laphroaig 10Yrs	75	1420
Talisker 10Yrs	90	1495
Auchentoshan 12Yrs	105	1800

⇒ BLENDED WHISKY ⇐

J.W. Blue Label	365	6355
J.W. Platinum Label	195	4360
J.W. Gold Label	125	2200
J.W. Black Label	80	1795
J.W. Double Black Label	90	1680
Chivas Regal 18Yrs	155	2995
Chivas regal 12Yrs	75	1735
Dewar's 12Yrs	75	1315
Dewar's 15Yrs	95	1735
Dewar's 18Yrs	130	2150
Monkey Shoulder	85	1470
Royal Salute 21Yrs	340	5670

➤ MINA CLASSICS ➤

Familiar classics with a touch of MINA

Aperol Spritz <i>Aperol, Cynar, Alberto Nani Prosecco, Tonic</i>	90
Margarita <i>Patron Reposado, Lime, Agave</i>	115
Passion Fruit Martini <i>Tito's Vodka, Passion Fruit, Campari</i>	95
Gin Basil <i>Plymouth, Bénédictine D.O.M., Green Chartreuse, Lemon, Basil</i>	95
Bloody Mary <i>Tito's Vodka, Tomato, Beetroot Shrub, Lemon, Tabasco</i>	75
Espresso Martini <i>Tito's Vodka, Kahlua, Espresso, Chocolate bitters</i>	95
Negroni <i>London N°3 Gin, Campari, Manchino Chinato, Thyme</i>	95
Old Fashioned <i>Woodford Reserve Bourbon, Maple Syrup, Bitters, Coffee</i>	105

➤ EXCEPTIONAL WINES BY THE GLASS ➤

WHITE (150ML)	GLS	BTL
Domaine Blain-Gagnard, 1er Cru 'Clos Saint-Jean' <i>Chassagne Montrachet</i>	470	2300
Hyde De Villaine Chardonnay <i>Los Carneros, Napa Valley</i>	320	1585
Terlano, Quarz, Alto Adige <i>Sauvignon Blanc</i>	310	1500
RED (150ML)		
Château Meyney <i>Saint - Estephe, 1999</i>	425	2100
Maison Champy Volnay <i>Cote de Beaune, Burgundy</i>	370	1800
Château Mont-Redon <i>Châteauneuf-du-Pape</i>	250	1200
Righetti, Amarone de Valpolicella <i>Veneto, Italy</i>	175	850
Catena, Malbec <i>Mendoza</i>	130	650

❖ NON-ALCOHOLIC ❖

	GLS
WINES	
Sparkling, Pearl's, Burgundy, France	85
Sparkling, Vintense Cuvee Prestige L.E., France	70
White, Vintense Wild Spring Chenin Blanc, South Africa	65
Red, Vintense Origine Les Galetes, France	70
Rosé, Vintense Cepage Syrah, France	65
BEERS	
Biere des Amis, Belgium	60
GIN	
Pearsons Hibiscus & Rose	60
Pearsons Rhubarb & Ginger	60
Pearsons Classic Botanicals	60
MOCKTAILS	
Peach & Pearl <i>Peach & Pear Cordial, Citrus, Pearl's Sparkling Wine</i>	55
Blueberry Fields <i>Blueberry Shrub, Pearl's Sparkling Wine</i>	55
Flamingo <i>Basil, Cucumber, Cardamom, Lime, Pineapple, Hibiscus</i>	55
Tropical Sunset <i>Passionfruit Puree, Lychee Puree, Pineapple juice, Cranberry Juice</i>	55
Sunflower <i>Caramel Banana Syrup, Green Apple, Passionfruit Puree</i>	55

➤ RUM ➤

	SGL	BTL
Matusalem Gran Reserva 15Yrs	80	1260
Zacapa 23Yrs	130	2365
Flor De Cana Centenario 25Yrs	220	4255
Plantation XO	175	2995
Appleton 12Yrs	90	1680
Bacardi 8Yrs	65	1105
Bacardi Gold	60	935
Bacardi Carta Blanca	55	895
Havana 7Yrs	75	1315
Captain Morgan	55	895
Sailor Jerry	55	895
Kraken	65	1150
Cachaça 51	60	895
Facundo Eximo	220	4255
Clément VSOP	90	1470

➤ TEQUILA ➤

	SGL	BTL
Clase Azul Plata	295	6750
Clase Azul Reposado	365	7950
Clase Azul Anejo	990	22500
Clase Azul Extra Anejo	4250	97500
Don Julio 1942	405	8260
Don Julio Anejo	135	2730
Don Julio Reposado	120	2470
Don Julio Blanco	95	2100
Patron Anejo	125	1995
Patron Reposado	115	1840
Patron Silver	80	1525
Patron Xo Coffee	60	1420
El Jimador Reposado	60	895
El Jimador Blanco	60	895
Del Maguey Crema De Mezcal	85	1525
Del Maguey VIDA	85	1525

➤ GIN ➤

Sipsmith London Dry	80	1420
Monkey 47	105	1630
London N°3	85	1530
London N°1	75	1495
Gin Mare	85	1495
The Botanist	75	1315
Hendrick's	75	1495
Tanqueray 10	80	1495
Tanqueray	60	895
Bombay Sapphire	65	995
Roku	80	1495
Oxley	90	1945
Hayman's	65	995
Hayman's Old Tom	65	995
Hayman's Family Reserve	75	1210
Hayman's Sloe Gin	65	995
Plymouth	65	995

➤ JAPANESE WHISKY ➤

Hibiki Harmony	115	2155
Yoichi Single Malt	105	2400
Nikka from the Barrel	105	1650
Yamazaki	140	

